

CONDUIT TRANSPOSITION

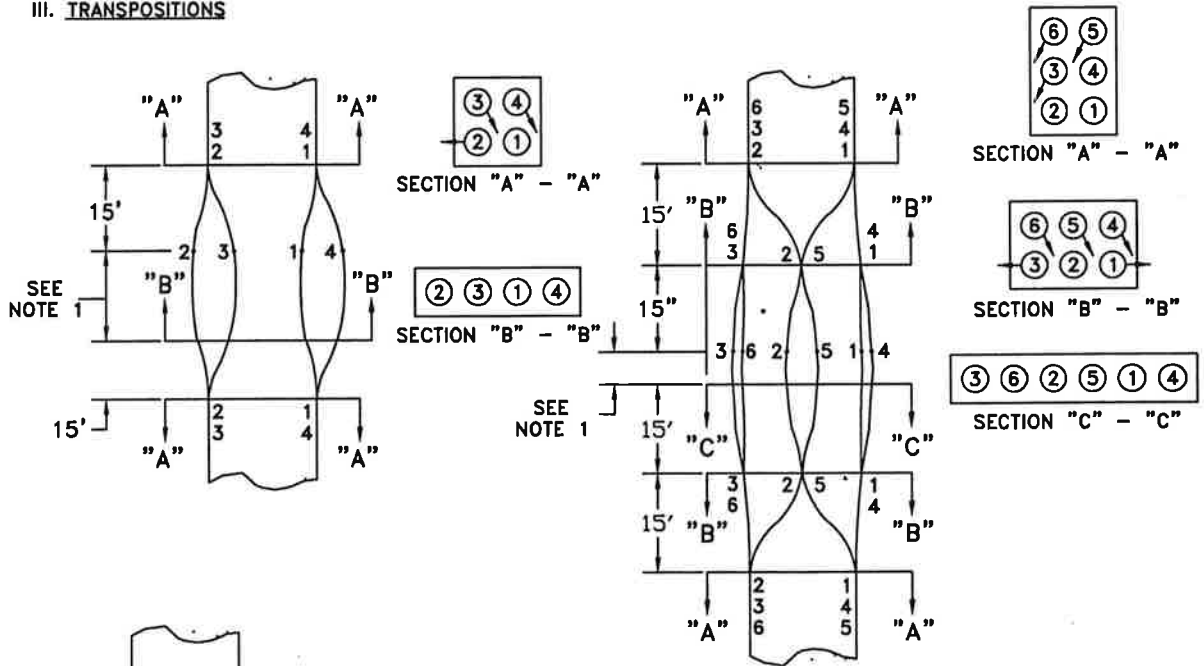
I. SCOPE

This standard details procedures for installing conduit transpositions.

II. GENERAL

Field conditions at times make it necessary to transpose conduits from one formation to another. Transpositions are usually required when it is impossible for conduit to go over, under or split an obstruction. When large amounts of rock, water, running sand, etc. are encountered excavation depth can be reduced by transposing the conduit. When physically possible, conduits shall be returned to their standard configurations before entering manhole.

III. TRANSPOSITIONS



NOTES:

1. Transition area: distance will vary dependent upon circumstance.
2. 2" minimum duct separation, horizontal and vertical shall be maintained.
3. Transpositions shown are one of several options. The relative position of each duct shall be the same on either side of the transition area.



APPROVED:
Richard L. Baker
 CHIEF, CONDUIT DIVISION
Khalil Zane
 DIRECTOR, DEPARTMENT OF TRANSPORTATION

**CITY OF BALTIMORE
 DEPARTMENT OF TRANSPORTATION
 CONDUIT DIVISION**

CONDUIT TRANSPOSITION

ISSUED	REVISED	REVISED	
8 / 2010			
STANDARD NO. BC 830.02			
SCALE : NONE		SHEET 1 OF 1	